

Grand Junction Field Office

Resource Management Plan Revision

Northwest RAC briefing

March 2012

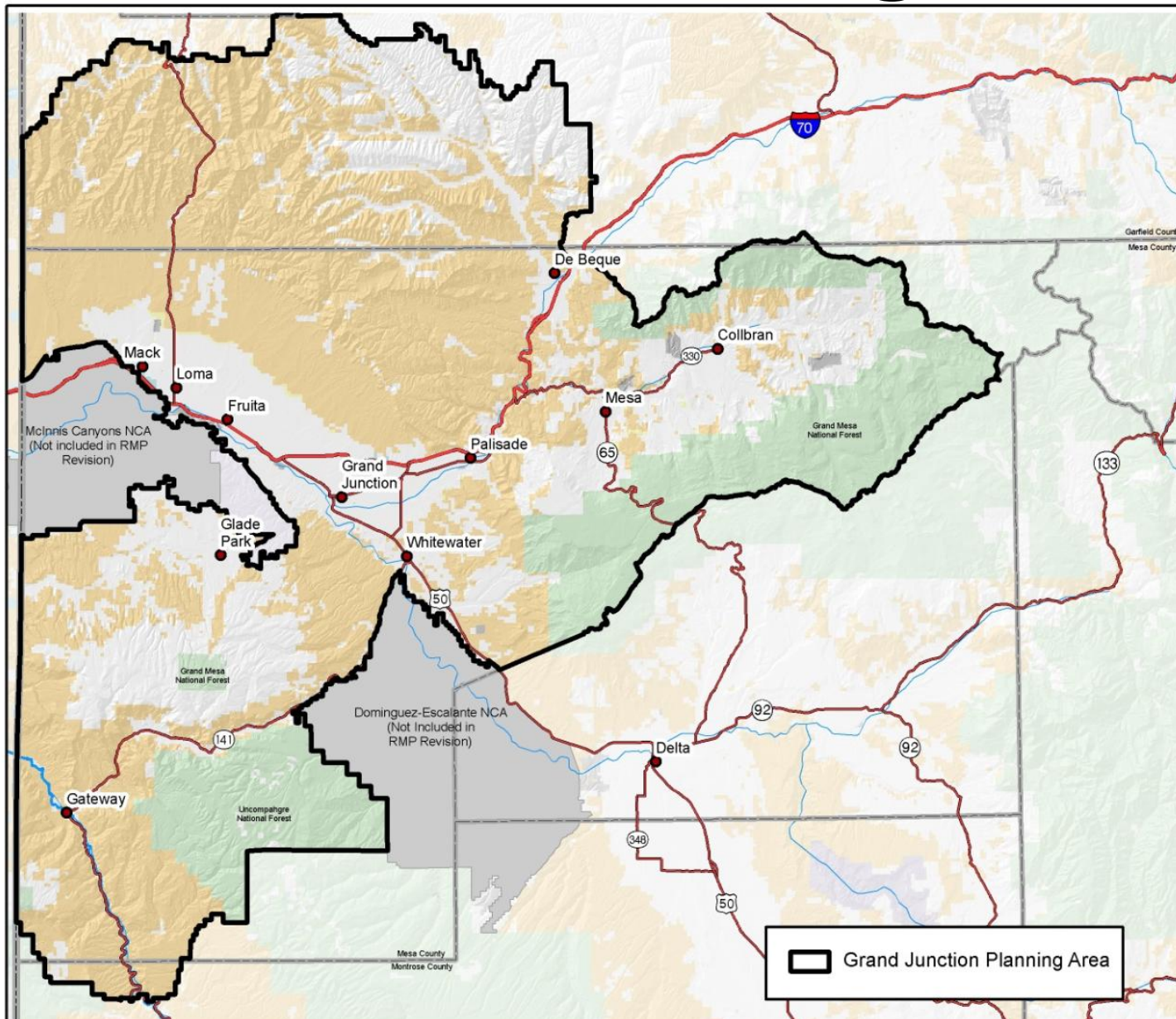
Timeline to Date

- **Alternatives Development: Finished October 2010**
 - **State Office review April 2010**
- **Impacts Analysis: Finished March 2011**
- **Extension granted - idle most of 2011 waiting for new Air Quality Protocol**
- **Eighteen Cooperating Agency meetings**
- **Seventeen RAC-Subcommittee meetings**
 - **Final meeting was in November 2011**

Timeline Ahead

- **DRMP State Office Review: February 27-March 23, 2012**
- **DRMP Washington Office Review: April-May 2012**
- **DRMP Public Review Period: Fall 2012**
 - **target = permission to Print in FY12**
- **PRMP Public Review: Fall 2013**
- **RMP/ROD: April 2014**

What is Unique About this RMP and Planning Area?



**1,061,400
Surface
Acres**

**169,800
Split-Estate
Acres**

BLM and the Grand Valley Economy



Economic impacts from:

– Recreation & Tourism

- **Motorized, Mechanized, hiking, boating, equestrian, and hunting are very important to the economy and quality of life in the Grand Valley**

– Oil and Gas

- **Oil and Gas, especially the oil field service industry, is very important to the Grand Valley Economy**
- **Most of this is from drilling outside the GJFO on fee or other BLM FOs (historic high = 39 wells drilled in 2007)**

Special Status Species

- Three T&E plants, including two with Proposed Critical Habitat
 - Colorado hookless cactus (*Sclerocactus glaucus*)–Threatened;
 - DeBeque phacelia (*Phacelia submutica*)–Threatened; and
 - Parachute penstemon (*Penstemon debilis*)–Threatened

(tend to overlap areas with higher oil and gas potential)



Special Status Species

- Gunnison sage-grouse
- Greater sage-grouse
- Five endangered fish, including four with Designated Critical Habitat
 - Greenback Cutthroat trout
 - 4 Colorado River Fishes (Colorado Pikeminnow, Razorback Sucker, Bonytail; and Humpback Chub) with Designated CH



Comprehensive Travel and Transportation Management

- Designating routes for all uses (motorized, mechanized, non-motorized)
- Two public comment periods
- Held Travel Management Workshops in Delta, DeBeque, Collbran, Gateway, Fruita and Grand Junction in 2009
- Five weeks of IDT meetings to develop recommended designations

Stipulations

- **NSO:** No Surface Occupancy
- **CSU:** Controlled Surface Use
- **TL:** Timing Limitation
 - GJFO chose not to develop additional alphabet soup of stipulations such as NSO=NGD, CSU=SSR etc.
 - So NSO/CSU/TL apply to all programs, not just fluid minerals



Oil & Gas Exploration

- 220 federal wells drilled over past 20 years
-historic total of 698 federal wells
- 690,000 acres currently leased
of 962,000 available acres
- 88% of RFD Very High, High, and Moderate O&G
potential is currently leased (154,000 acres)
- RFD projects geologic potential for 10,000 wells
(3,600 federal) wells in planning area



ALTERNATIVES

- **A-NO ACTION ALTERNATIVE/1987 RMP**
- **B-BLENDED/BALANCED (Preferred)**
- **C-RESOURCE PROTECTION/CONSERVATION**
- **D-RESOURCE USE/DEVELOPMENT**

Key Allocations - TRAVEL MANAGEMENT

Alternative	A Current Mgt	B Preferred	C Conservation	D Development
Acres <u>OPEN</u> to Cross country motorized travel	457,900	1 area	0	More than B
Acres <u>CLOSED</u> to motorized travel	35,300 Did not include WSAs	More than D	most	More than A
Acres <u>LIMITED</u> to designated routes	225,500	Less than D	Less than B	Most
Acres <u>LIMITED</u> to existing routes	342,700	0	0	0

Key Allocations - TRAVEL MANAGEMENT

Reasons for Closures

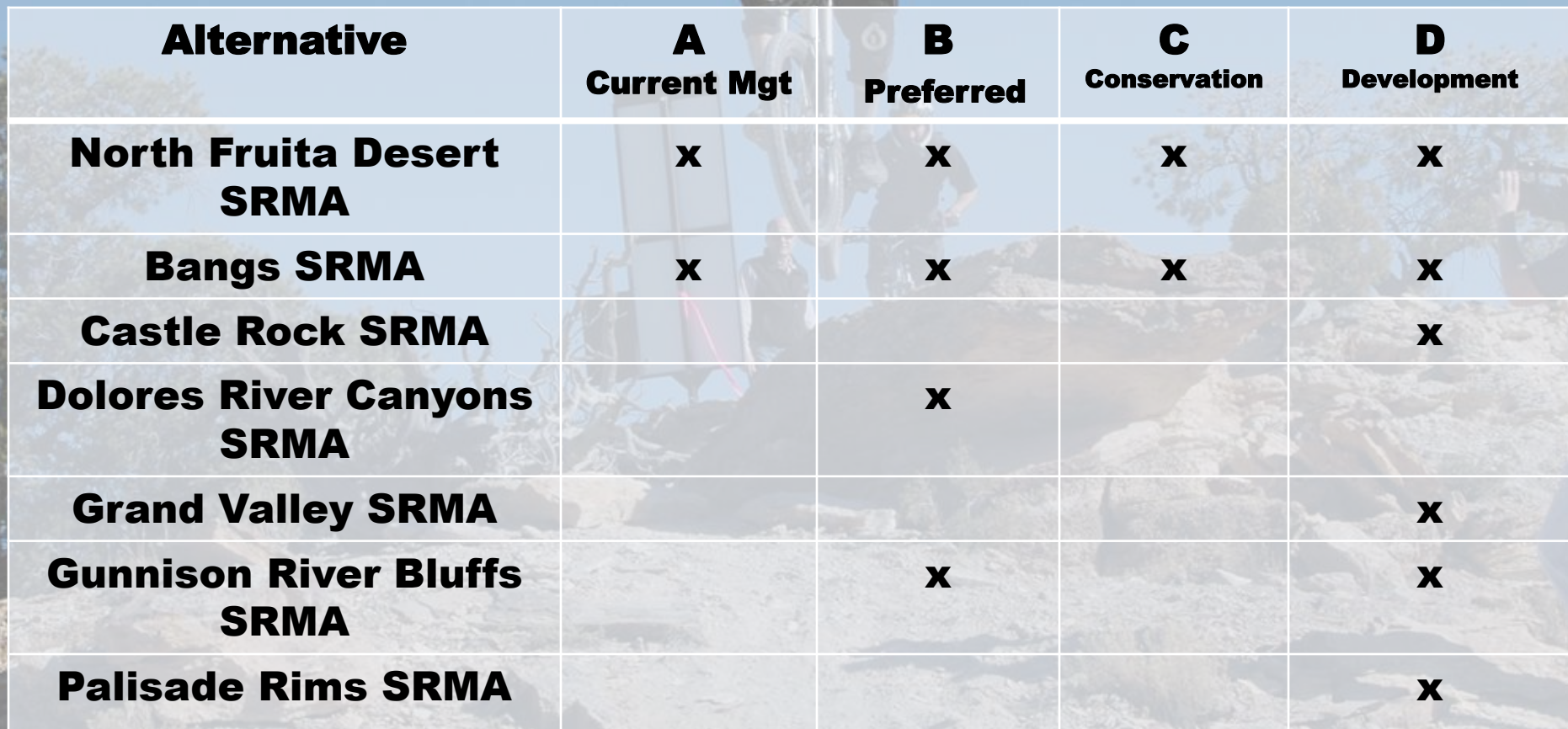
A: 1 ACEC, 1 Critical Research Area, Palisade Watershed (WSAs [96,500 acres] weren't technically closed in Current RMP)

B: 4 WSAs, several ACECs, few LWCs, Critical Research Areas, portions of Wildlife Emphasis Areas

C: 4 WSAs, more ACECs, 1 WSR segment, more LWCs, Critical Research Areas, more Wildlife Emphasis Areas

D: 4 WSAs, 1 ACEC, 1 Critical Research Area

Key Allocations – Recreation



Alternative	A Current Mgt	B Preferred	C Conservation	D Development
North Fruita Desert SRMA	X	X	X	X
Bangs SRMA	X	X	X	X
Castle Rock SRMA				X
Dolores River Canyons SRMA		X		
Grand Valley SRMA				X
Gunnison River Bluffs SRMA		X		X
Palisade Rims SRMA				X

Key Allocations – Recreation

A faded background image showing a person riding a motorcycle on a rocky, uneven trail. The rider is wearing a helmet and dark clothing. The scene is outdoors with some trees and a clear sky in the background.

Current SRMAs would become smaller under action alternatives because:

- The BLM's definition of SRMAs has changed
- Areas did not have primarily recreation related opportunities
- Had other priority uses that would limit our ability to prioritize recreation related opportunities

Key Allocations – Stipulations Overview

Alternative	A Current Mgt	B Preferred	C Conservation	D Development
No Surface Occupancy (NSO)	Least	Slightly more than D	Most	Slightly more than A
Controlled Surface Use (CSU)	Least	Most	Slightly less than B	Slightly less than B
Timing Limitations (TL)	Least	Similar to C & D	Similar to B & D	Similar to C & B

Key Allocations – Key NSO Stipulations

Alternative	A Current Mgt	B Preferred	C Conservation	D Development
Fragile/Slumping Soils	55,000	Same as A	most	none
Steep Slopes	433,000	Similar to A		
ACECs	29,000	>A	Most	Least
Wildlife Emphasis Areas	0	Some	More	0
Wild Horse Range	0	Some		0
Visual Resources	190,000	< A		
Wilderness Characteristics	0	some	Most	0
Recreation Areas	114,000	< A		

Key Allocations – Fluid Minerals Leasing

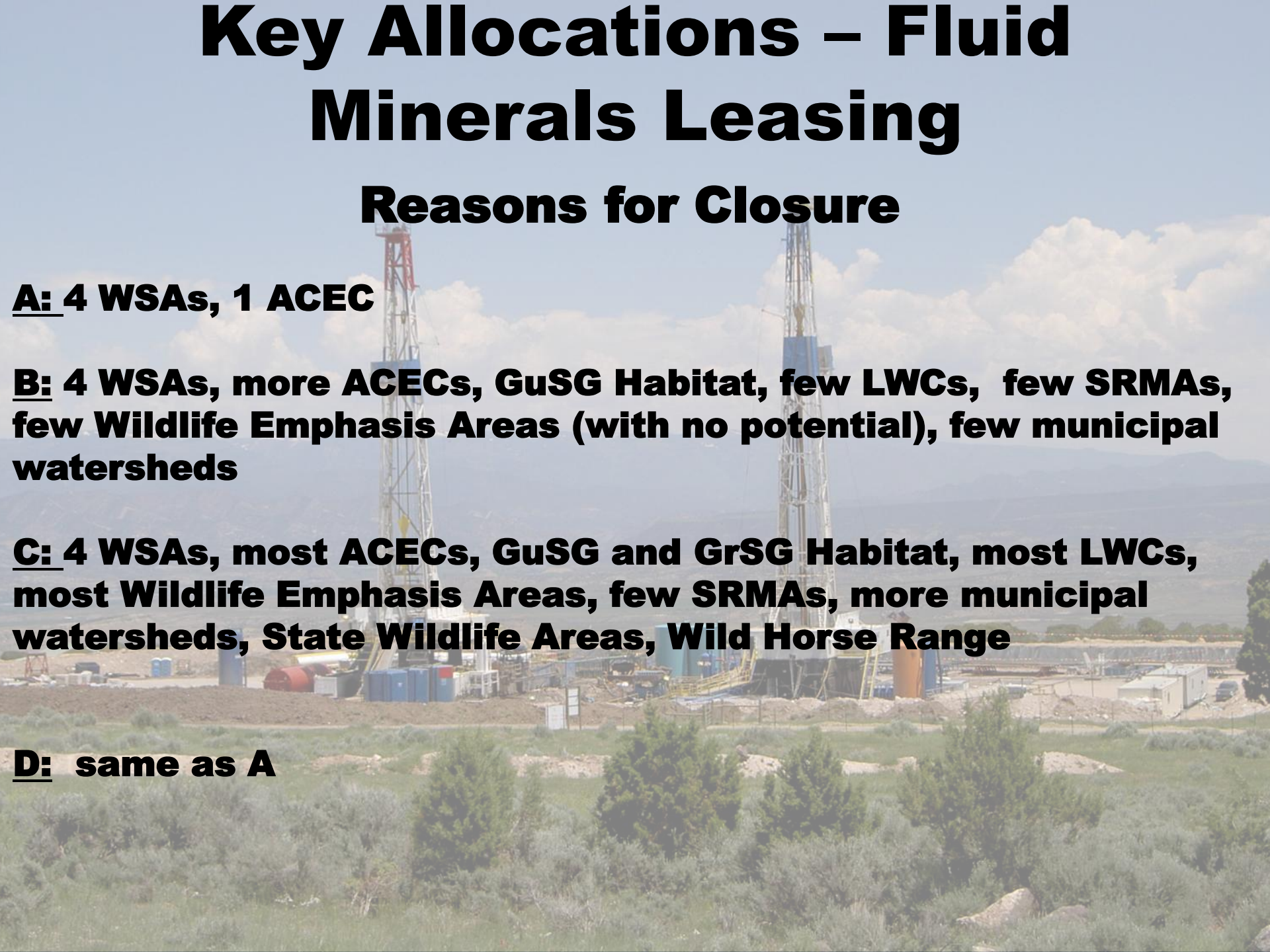
Reasons for Closure

A: 4 WSAs, 1 ACEC

B: 4 WSAs, more ACECs, GuSG Habitat, few LWCs, few SRMAs, few Wildlife Emphasis Areas (with no potential), few municipal watersheds

C: 4 WSAs, most ACECs, GuSG and GrSG Habitat, most LWCs, most Wildlife Emphasis Areas, few SRMAs, more municipal watersheds, State Wildlife Areas, Wild Horse Range

D: same as A



Key Allocations – Municipal Watershed Protections

Alternative B (preferred): Grand Junction and Palisade Municipal Watersheds Closed to Fluid Mineral Leasing in Preferred Alternative

Alternative C : Grand Junction, Palisade, and Jerry Creek Watersheds, Collbran and Mesa/Powderhorn Source Water Protection Areas closed to Fluid Mineral Leasing



Key Allocations – Coal

Alternative	A Current Mgt	B Preferred	C Conservation	D Development
Acres Unacceptable for Coal Leasing and Development	36,700	Slightly more than D	Slightly more than B	Slightly more than A
Acres Acceptable for Coal Leasing and Development	300,700	Slightly less than D	Slightly less than B	Slightly less than A

Additional Unacceptable Acres beyond Alt A:

Alt B = Colorado River Corridor, 2 municipal Water supplies

**Alt C = Colorado River Corridor, 3 municipal Water supplies,
2 ACECs, 1 WSR segment**

**Alt D = same criteria as A, but refined potential area makes
difference in acres**

Key Allocations – Livestock Grazing

Alternative	A Current Mgt	B Preferred	C Conservation	D Development
Acres Open for Grazing	977,200	Slightly less than D	Slightly less than B	Slightly less than A
Acres Closed for Grazing	48,600	Slightly more than D	Slightly more than B	Slightly more than A
Starting AUMs	63,873	Slightly less than D	Slightly less than B	Same as A

Alt B – Only currently unused Allotments would be closed
 (small category C allotments difficult for permittees/BLM to manage)

Alt C – Some currently permitted allotments would be closed
 (Riparian Issues, Palisade Watershed)

07/26/2010 15:06

Key Allocations – ACECs

Alternative	A Current Mgt	B Preferred	C Conservation	D Development
Number of ACECs	5	Less than C	24	5
Acres	28,900	Less than C	168,200	33,200



Key Allocations – Lands Managed for Characteristics

Alternative	A Current Mgt	B P referred	C Conservation	D Development
Units Managed for Wilderness Characteristics	0	few	most	0
Acres	0	Less than C	10% of FO	0

AUG 26 2011

Key Allocations – Wild and Scenic Rivers

Alternative	A Current Mgt	B Preferred	C Conservation	D Developm ent
Segments Managed as Eligible	14	Undecided	0	0
Segments Managed as Suitable	0	Undecided	14	0
Total Miles of River Segment	99.5	Undecided	99.5	0

Key Allocations – Wildlife Emphasis Areas

Alternative	A Current Mgt	B Preferred	C Conservation	D Development
Number of Wildlife Emphasis Areas	0	several	Most	1

Most important habitat for sage grouse, bighorn sheep, pronghorn, kit fox, burrowing owl, and wintering deer/elk

Leasing Reform and Master Leasing Plans



- **Received an external request to prepare an MLP for the “Shale Ridges and Canyons” area**
- **Appendix performs an MLP-like analysis**

Questions?

